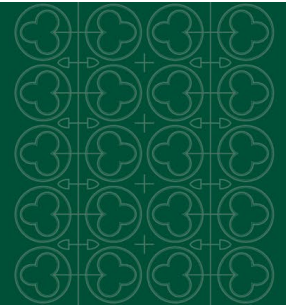




St. Columba's College



Registration, Confirmation of Entry and College Fees 2025-2026

Registration Fee -

Euro €

Payable at time of application and is non-refundable

200

On payment, please write the child's full name in the bank reference field.

Confirmation of Entry Fee (*Payable on acceptance of place and allowable against the final account sent in July where pupil leaves at end of academic year. Balance after charges for extras refunded the term after pupil leaves).*

Irish/UK/EU Nationals

1,500

Non-EU Nationals

2,000

Overseas payments must be paid by online banking (see bank details below). **Please write the child's full name in the bank reference field.**

Name of Account: St. Columba's College

Name of Bank: AIB Bank, 40-41 Westmoreland Street, Dublin 2, Ireland

Account Number: 07161068

Sort Code:

93-33-84

IBAN Number: IE60AIBK93338407161068

Swift/BIC Code:

AIBKIE2D

Annual College fees and other charges

Day Fees	Euro €
Day Pupil Fee	11,093 (Includes lunch & two snacks)
Day Boarding Fee	14,566 (Includes lunch, supper & two snacks)
Summer Works Levy	800

Boarding fees

Junior (Forms I – III)	Euro €	Senior (Forms IV – VI)	Euro €
Irish/UK/EU Pupils	25,270	Irish/UK/EU Pupils	30,270
EU Pupils Admin Fee (excl Ireland & UK)	1,755	EU Pupils Admin Fee (excl Ireland & UK)	1,755
Non-EU Pupils	31,322	Non-EU Pupils	36,322
Summer Works Levy	800	Summer Works Levy	800

***The annual fees above include all tuition, meals and accommodation.**

Fees are payable bi-annually in September and February

Please note, if it arises that a place becomes available from January, the fees charged will be for Two terms

PTO

For discounts see the College discount policy on the website. Children of Church of Ireland clergy are entitled to a 50% discount. Overseas pupils who require a visa to enter the country must pay the full year's fees in advance, and the extras at the end of each term. Interest will be charged on outstanding balances in order to offset the interest charge otherwise borne by the College.

Parents are required to give six months' notice of removal of a pupil or, alternatively, to pay a half year's fees in lieu of notice. A pupil whose fees have not been paid by Half Term may not be allowed to remain at the College.

Fees for Board and Tuition are inclusive, covering all essentials except the following:

a) Chargeable Items

Extra text books, College publications, extra stationery, external exam fees, travelling expenses (relating solely to College activities), dry cleaning, emergency doctors', specialists' and dentists' fees and transport connected therewith, prescriptions, transport for games (except as a member of a team) and for other College activities or outings, gowns, surplices and House ties, weekly House allowance.

b) Optional Extras (Per Term) Any Fee Accounts with an outstanding balance will not be allowed to sign up for any optional extras

Subjects not on the timetable (by arrangement)	Euro €
English as a Foreign Language Programme <ul style="list-style-type: none">- One-To-One Class - charge varies according to number of classes taken- Group Class - charge varies according to number of classes taken	
Instrumental Music – Piano, Violin, Flute, Guitar, etc. – Annual fee Children learning a second or third instrument will be charged at €900 and €800 respectively per year. This discount will also apply to siblings.	1,000

Parents are required to give at least one full term's notice of withdrawal from the Learning Support Programme and music tuition or, alternatively, to pay a full term's fees in lieu of notice.

Items not chargeable to Fees accounts

Expenses for activities not connected with the College (e.g. private driving lessons, health insurance premiums, expenses in connection with Exeats, Exoduses or Half Terms, medical bills relating to ongoing treatment) cannot be charged to the College nor to pupils' accounts. These remain the responsibility of parents/guardians.

Trips

The cost of optional domestic/continental/overseas trips organised by the College for pupils must be paid in full in advance of each trip. **Any Fee Accounts with an outstanding balance will not be allowed to take part.**

Travel

The College wishes to advise that it is not in a position to offer facilities for the payment (as distinct from the booking) of transport/taxis to or from airports/train stations or for any transport or charges not connected with College activities. These items cannot be charged to pupils' accounts (other than in exceptional circumstances).

Guardians

For overseas parents/guardians with no prior connection with Ireland, and with no local guardian in place, a professional guardian agency is essential to assist with the general and financial well-being of your child or children.

The name, address and contact numbers for the nominated guardian for pupils living outside Ireland must be notified to the Warden's Office before the start of term.